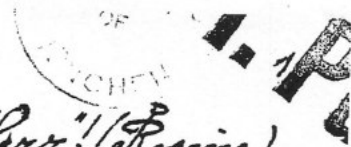




Der Souverän von...

von G. Rossini.

No. 4. Arie: "Frag' ich mein beklommenes Herz!" (Rossini)



Andante.

Violine II.

First staff of music, treble clef, 3/4 time signature, starting with a dynamic marking of *p*.

Second staff of music, treble clef, continuing the melodic line.

Third staff of music, treble clef, featuring a boxed section labeled 'A' and a dynamic marking of *p*.

Fourth staff of music, treble clef, with the instruction 'arco' and a dynamic marking of *p*.

Fifth staff of music, treble clef, with a boxed section labeled 'B' and a dynamic marking of *p*.

Sixth staff of music, treble clef, with a dynamic marking of *p*.

Seventh staff of music, treble clef, with a boxed section labeled 'C' and the tempo marking 'Moderato'.

Eighth staff of music, treble clef, with a dynamic marking of *p*.

Ninth staff of music, treble clef, with a boxed section labeled 'D' and a dynamic marking of *p*.

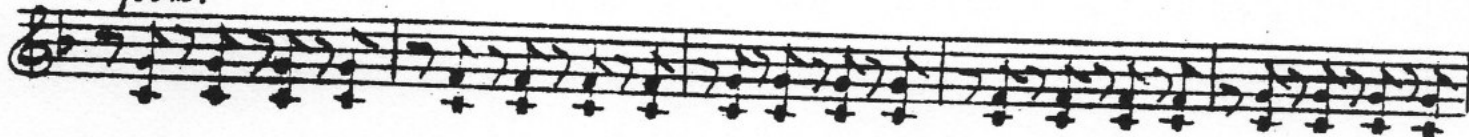
Tenth staff of music, treble clef, with a dynamic marking of *f*.

Eleventh staff of music, treble clef, concluding the piece.

Violine II.

2. **E**

*ppicc.*



**F**

