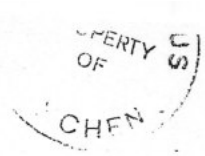




# Der Barbier von Sevilla von G. Rossini.

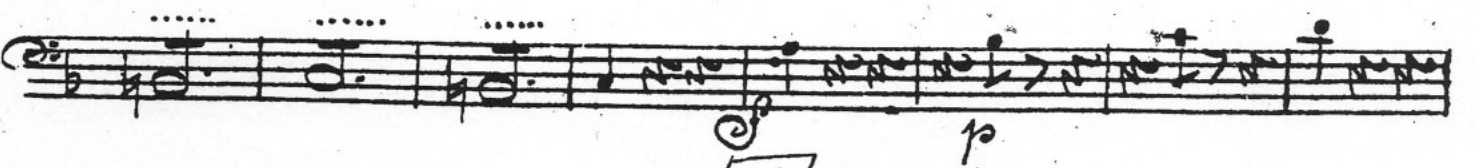
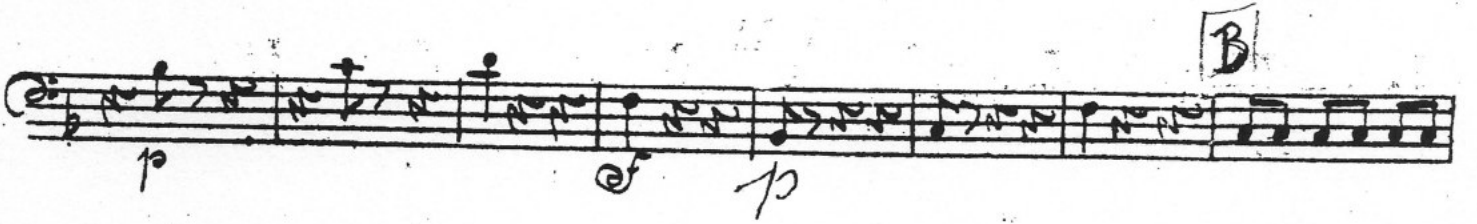
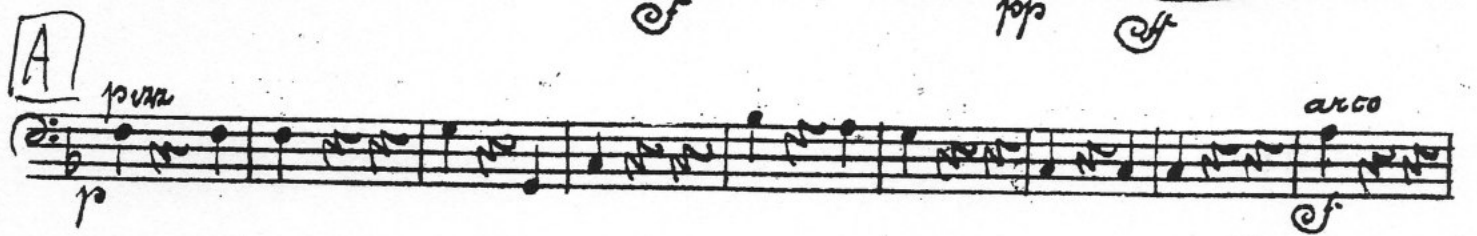
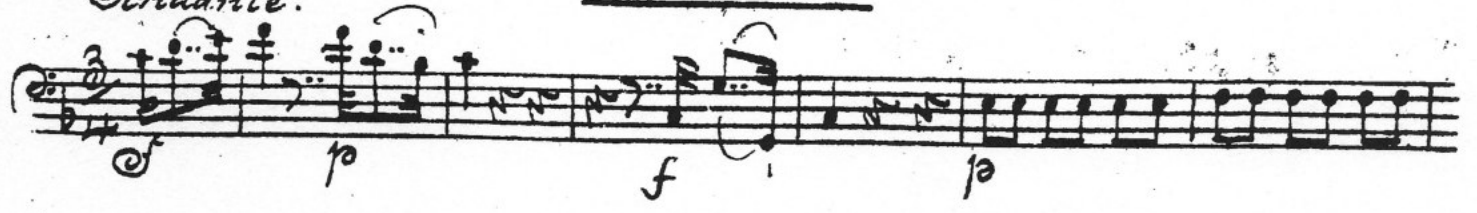


J. P. ...

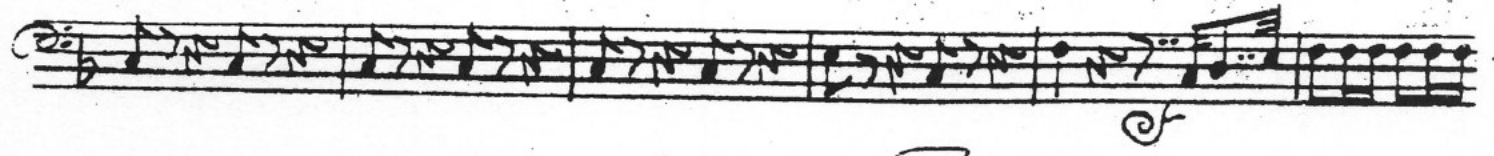
## No. 4. Arie: "Frag ich mein beklommenes Herz" (Rosine)

### Violoncell.

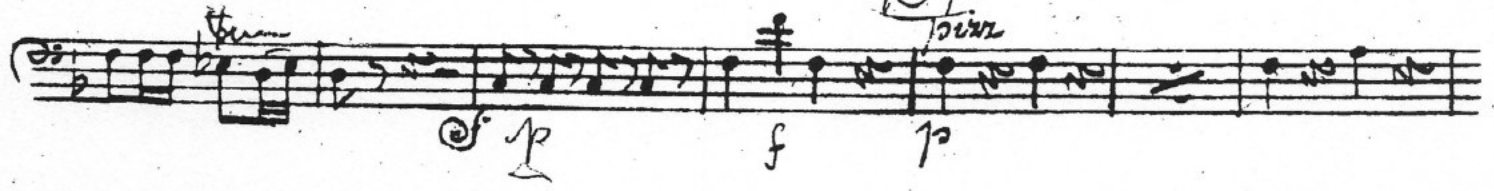
*Andante.*



**C** *Moderato.*



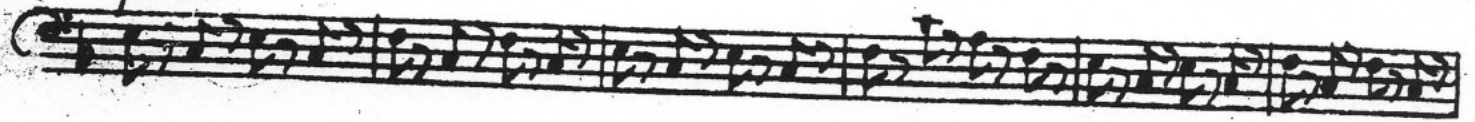
**D** *trun*



Violoncell.

E] 2.

*pizz.*

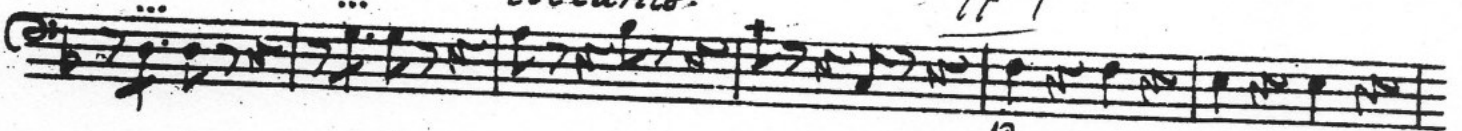


*arco*



*col canto.*

**ff**



*p*

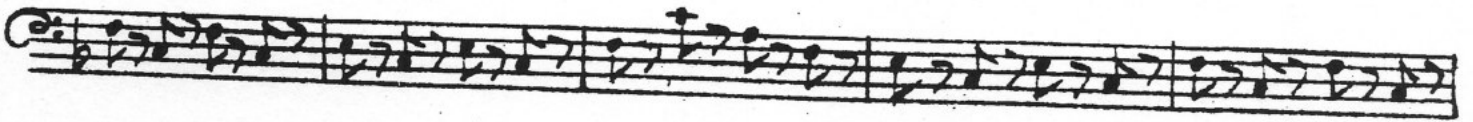
**C**

*pizz.*



*cresc.*

*p.*



*arco.*



*col canto.*



**71** *Tri Allegro.*

