

Peter Ilyich Tchaikovsky  
March Slav, Op. 31

Timpani.

in F. As.  
Moderato in modo di marcia funebre.

pp

1 2

3 4 5 6

7 8 9 10

1 2 3 4 5 6 7 8 8

7 1 2 3 4 5 6 7 8 9 10

mf p cresc. poco a poco

11 12 13 14 15 16 4

mf f ff ff

fff

3 3 3 3

7

Tchaikovsky — March Slav, Op. 31

Timpani.

in B. As. F.  
Lo stesso tempo.

14

ff

6

ff ff p

2 3 4 5 6 7 8 9 10 11 12 13  
poco cresc. mf

14 15 16 4  
f ff ff

fff

3 8 7  
mf mf p

Tchaikovsky — March Slav, Op. 31

**Timpani.**

**Più mosso**

Solo

1 2 3 4 5 6

*f* *p*

7 8 9 4

*poco più f* *mf*

7

*ff*

**Andante molto maestoso.**

*fff*

**Allegro risoluto.**

1. 2.

Peter Ilyich Tchaikovsky  
March Slav, Op. 31

**Tamburo militare.**

**Moderato in modo di marcia funebre.**

28

1 2 3 4

5 6 7 6 1

2 3 4 5 6

7 8 4

*p*

*mf* *p*

*cresc. poco a poco* *f*

*fp* *ff* *ff*

*ff*

**Lo stesso tempo.**

7 6 3

*p* *p*

*ff* 8

Tchaikovsky — March Slav, Op. 31

2

**Tamburo militare.**

4 *ff*

15 *p* poco a poco cresc.

3 4 5 6 7 *mf*

8 *fp cresc.* *ff* *f*

3 3 3 3

1 1 2 *p*

3 4 5 6 7 *p*

9 6 *mf* *p*

**Più mosso.**

Tchaikovsky — March Slav, Op. 31

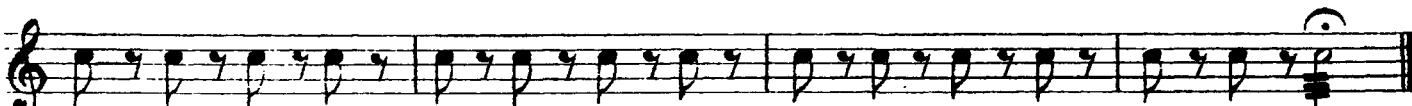
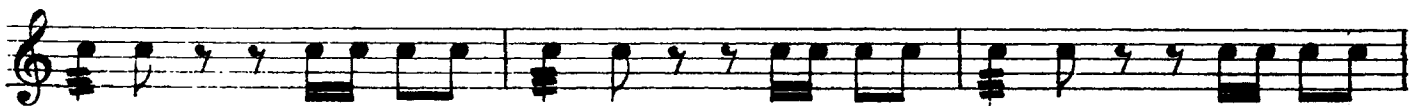
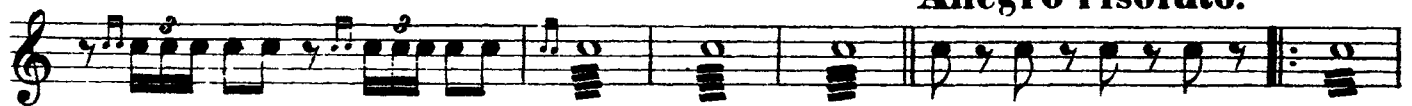
**Tamburo militare.**



**Andante molto maestoso.**



**Allegro risoluto.**



Peter Ilyich Tchaikovsky  
March Slav, Op. 31

**Cassa, Piatti et Tam-Tam.**

**Moderato in modo di marcia funebre.**

12 Piatti. 1 2 3 4 5  
*mp* Cassa.

6 7 8 8 7 Piatti. *mf* 16

12 Piatti. *ff* 1 2 3  
Cassa.

4 5

7

**Lo stesso tempo.**  
18 *ff*

7 Piatti. *ff* 25 12

Tchaikovsky — March Slav, Op. 31

2

**Cassa, Piatti et Tam-Tam.**

Musical notation for the first section, featuring a bass line with triplets and a 'Piatti' section. The notation includes a treble clef, a key signature of one flat, and a 3/4 time signature. The first three measures contain triplet patterns. Measure 8 is marked 'Piatti.' and measure 9 is marked 'Più mosso.' The section ends with a double bar line and a fermata over the final note.

**Andante molto maestoso.**

Piatti.

Musical notation for the second section, featuring a piano accompaniment for Cassa and Tam-Tam. The notation includes a grand staff with a treble clef and a bass clef. The Cassa part is marked 'Cassa.' and the Tam-Tam part is marked 'Tam-Tam.' The tempo is 'Andante molto maestoso.' The section ends with a double bar line and the instruction 'Tam-Tam tacet.'

**Allegro risoluto.**

Musical notation for the third section, featuring a bass line with a first and second ending. The notation includes a treble clef, a key signature of one flat, and a 3/4 time signature. The section begins with a first ending and a second ending. The tempo is 'Allegro risoluto.'